

## DATES TO REMEMBER

Professional Practice Day  
9th June 2023  
No Children at School

King's Birthday  
Public Holiday  
12th June 2023

Term 2 Ends  
23rd June 2023  
Parent Collection:  
1.30pm  
Buses: 1 hour earlier

Term 3 Commences  
10th July 2023



## FROM THE Principal



Dear Parents and families,

### Last day of term two

Just a reminder to all parents and carers that school finishes at 2 pm on Friday the 23rd of June. This means that if your child catches the bus, they will be home 1 hour earlier. Please make sure that you are in attendance to meet your child at the bus stop. Also, if you pick your child up from school you will need to be here by 1:30 pm. There will be no staff in attendance to look after the students. I wish you all a safe and happy holiday.



### Curriculum Day/Professional Practice Day

This Friday the 9<sup>th</sup> of June is a pupil free day. All teachers will be engaging in professional practice and collaboration. Therapists and classroom-based education support officers will be engaged in professional learning also.



### Public Holiday

Monday the 12<sup>th</sup> of June is a public holiday for the King's birthday. We look forward to seeing all the students back at school on Tuesday the 13<sup>th</sup> of June.



### Sexual Health Victoria

We recently held two sessions facilitated by Sexual Health Victoria. These sessions were well attended by parents and carers and gave them a forum to ask questions and get ideas to support their children. The topics they covered included public and private behaviours, protective behaviours, body awareness and emotions. I would strongly encourage parents to reach out to them with any concerns.



### Community Services and Pathways Expo

On Wednesday we held a community services and pathways expo at the school. There were 35 service providers in attendance, and it was well attended. Parents and carers gathered a lot of information on post school options and the other services available. If you couldn't make it and would like more information, please contact the office.



### Capital Works

We are now in the tender stage of our building project which is very exciting. In our last meeting we discussed access, fencing, audio visual options, hearing augmentation and therapy provision. In our next meeting will discuss landscaping, interior design, and finishes.



### Student Wellbeing Day

Last week we had a student wellbeing day. The students enjoyed watching a movie with popcorn, engaging in sensory activities, cookie decorating and a winter wonderland with fake snow. All the students really enjoyed the day.

### Healthy Eating Week

This week we are having healthy eating week where we are "Eating the Rainbow." Activities have included a Fruit Fun Disco, healthy snacks delivered by the Student Representative Council, a Superfruit Hero Art Display and Susi for Schools. The students have really enjoyed all the great activities and tried healthy fruit snacks.



## Principal's Award

The principal award goes to Cooper:

He has been making great choices in the classroom, he has been a great help during our Sensory Cooking sessions and trying his best to increase his independence.



You are a superstar Coops!!!



## Jackie Lowther

Principal



# Happy Birthday

## Name

Sophie D  
Mohand Y  
Nasir R  
Samuel A  
Roksa R  
Amy C  
Wahida A  
Gurkamal S  
Joshua N  
Seja L

## Date

8th June  
8th June  
10th June  
12th June  
13th June  
14th June  
15th June  
19th June  
22nd June  
22nd June

## Room

Rm 08  
Rm 22  
Rm 11  
Rm 22  
Rm 09  
Rm 29  
Rm 31  
Rm 09  
Rm 06  
Rm 32

# Happy Birthday



<b>Name</b>	<b>Date</b>	<b>Room</b>
Ciara T	23rd June	Rm 23
Richardson S	26th June	Rm 04
Glory S	28th June	Rm 02
Adam U	30th June	Rm 21
Lincoln N	1st July	Rm 10
Andrew P	2nd July	Rm 26
Angel H	5th July	Rm 03
Ronaldo M	5th July	Rm 28
Skyler E	6th July	Rm 03
Natalie H	10th July	Rm 16

# Happy Birthday

## Name

Steven K

Muhammad C

Aqbal R

Jiraiya R

Aerianna O

Nayher T

Salma K

Alex T

## Date

12th July

13th July

15th July

15th July

18th July

19th July

19th July

19th July

## Room

Rm 02

Rm 13

Rm 14

Rm 20

Rm 18

Rm 12

Rm 15

Rm 33



# EEP 4

*EEP4 has been enjoying spending time outside, especially on the sunny days! We like exploring the sensory garden, touching different textures, raking the gravel, and watering the plants.*





## Keeping busy in Room 16!

We have enjoyed participating and learning many different activities and had fun on our adventures.







## Middles Room 19

The Middles have had such a fun start to the year!

We have really enjoyed doing puzzles, heading out in the community, counting and working with words and letters!





**Middles Room 19**

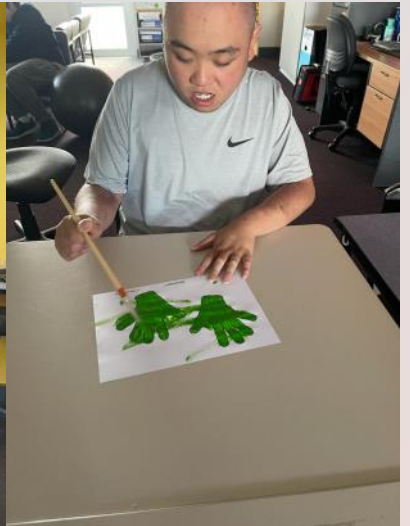
**We have kept busy this year in room 19! Working our muscles in the engine room or heading out for bushwalks at Blackwood, we learn and have fun!**





In Room 21 we do fantastic activities and have fun!  
We enjoy interacting, socialising and experiencing new things: We are kind and do our best!







# Music Therapy

This year, the students have been having a rockin' good time in Music Therapy. Playing drums, singing and dancing are some of their favourite activities. The Music Therapy room is a space in which the students can express themselves freely, whilst learning new life skills.

# Community Services / Pathways Expo



# Springvale Park Special Developmental School



## COMPLAINTS POLICY

### PURPOSE

The purpose of this policy is to:

- provide an outline of the complaints process at Springvale Park SDS so that parents and members of the community are informed of how they can raise complaints or concerns about issues arising at our school
- ensure that all complaints regarding Springvale Park SDS are managed in a timely, effective, fair and respectful manner.

### SCOPE

This policy relates to complaints brought by parents, carers, students or members of our school community and applies to all matters relating to our school. In some limited instances, we may need to refer the complainant to another Department of Education and Training process where there are different mechanisms in place to review certain decisions, for example, expulsion appeals.

### POLICY

Springvale Park SDS welcomes feedback, both positive and negative, and is committed to continuous improvement. We value open communication with our families and are committed to understanding complaints and addressing them appropriately. We recognise that the complaints process provides an important opportunity for reflection and learning.

We value and encourage open and positive relationships with our school community. We understand that it is in the best interests of students for there to be a trusting relationship between families and our school.

When addressing a complaint, it is expected that all parties will:

- be considerate of each other's views and respect each other's role
- be focused on resolution of the complaint, with the interests of the student involved at the centre
- act in good faith and cooperation
- behave with respect and courtesy
- respect the privacy and confidentiality of those involved, as appropriate

- operate within and seek reasonable resolutions that comply with any applicable legislation and Department policy.
- recognise that schools and the Department may be subject to legal constraints on their ability to act or disclose information in some circumstances.

### Preparation for raising a concern or complaint

Springvale Park SDS encourages parents, carers or members of the community who may wish to submit a complaint to:

- carefully consider the issues you would like to discuss
- remember you may not have all the facts relating to the issues that you want to raise
- think about how the matter could be resolved
- be informed by checking the policies and guidelines set by the Department and Springvale Park SDS

### Support Person

You are welcome to have a support person to assist you in raising a complaint with our school. Please advise us if you wish to have a support person to assist you, and provide their name, contact details, and their relationship to you.

### Complaints process

Springvale Park SDS is always happy to discuss with parents/carers and community members any concerns that they may have. Concerns in the first instance should be directed to your child teacher, Assistant Principal or Principal. Where possible, school staff will work with you to ensure that your concerns are appropriately addressed.

Where concerns cannot be resolved in this way, parents or community members may wish to make a formal complaint to the Principal or Assistant Principal, noting that formal complaints should be directed to the Principal or nominee.

If you would like to make a formal complaint, in most cases, depending on the nature of the complaint raised, our school will first seek to understand the issues and will then convene a resolution meeting with the aim of resolving the complaint together. The following process will apply:

1. **Complaint received:** Please either email, telephone or arrange a meeting through the front office with the Assistant Principal or Principal, to outline your complaint so that we can fully understand what the issues are. We can discuss your complaint in a way that is convenient for you, whether in writing, in person or over the phone.
2. **Information gathering:** Depending on the issues raised in the complaint, the Principal, Assistant Principal or nominee may need to gather further information to properly



understand the situation. This process may also involve speaking to others to obtain details about the situation or the concerns raised.

3. **Response:** Where possible, a resolution meeting will be arranged with the Principal to discuss the complaint with the objective of reaching a resolution satisfactory to all parties. If after the resolution meeting we are unable to resolve the complaint together, we will work with you to produce a written summary of the complaint in the event you would like to take further action about it. In some circumstances, the Principal may determine that a resolution meeting would not be appropriate. In this situation, a response to the complaint will be provided in writing.
4. **Timelines:** Springvale Park SDS will acknowledge receipt of your complaint as soon as possible (usually within 48 hours) and will seek to resolve complaints in a timely manner. Depending on the complexity of the complaint, Springvale Park SDS may need some time to gather enough information to fully understand the circumstances of your complaint. We will endeavour to complete any necessary information gathering and hold a resolution meeting where appropriate within 10 working days of the complaint being raised. In situations where further time is required, Springvale Park SDS will consult with you and discuss any interim solutions to the dispute that can be put in place.

## Resolution

Where appropriate, Springvale Park SDS may seek to resolve a complaint by:

- an apology or expression of regret
- a change of decision
- a change of policy, procedure or practice
- offering the opportunity for student counselling or other support
- other actions consistent with school values that are intended to support the student, parent and school relationship, engagement, and participation in the school community.
- keep written records of complaints which relate to the Child Information Sharing Scheme and the Family Violence Information Sharing Scheme to meet regulatory requirements - refer to [Child and Family Violence Information Sharing Schemes](#) for further information for other complaints, keep a written record of serious, substantial or unusual complaints that require resolution actions and document all steps taken to achieve agreement].

Please note that unreasonable conduct (e.g. vexatious complaints) may need to be managed differently to the procedures in this policy.

In some circumstances, Springvale Park SDS may also ask you to attend a meeting with an independent third party, or participate in a mediation with an accredited mediator to assist in the resolution of the dispute.

## Escalation

If a parent or community member is not satisfied that their complaint has been resolved by the school, or if their complaint is about the Principal, then the complaint should be referred to the South Eastern Victorian region by contacting 1300 338 738.

Springvale Park SDS may also refer a complaint to South Eastern Victorian Region if we believe that we have done all we can to address the complaint.

For more information about the Department's *Parent Complaints* policy, including the role of the Regional Office, please see: [Parent complaints policy](#).

## COMMUNICATION

This policy will be communicated to our school community in the following ways:

- Available publicly on school website
- Included in staff induction processes
- Included in our staff handbook/manual
- Included in transition and enrolment packs
- Discussed at parent information nights/sessions
- Annual reference in school newsletter

## FURTHER INFORMATION AND RESOURCES

The Department's Policy and Advisory Library (PAL):

- [Complaints - Parents](#)

The Department's parents website:

- [Raise a complaint or concern about your school](#)

## POLICY REVIEW AND APPROVAL

Policy last reviewed	23/2/2022
Consultation	
Approved by	Principal
Next scheduled review date	February 2025



## VISION

Our vision at Springvale Park Special Developmental School is to empower our students by building independence through functional life skills, communication and to equip them for the world in which they live.

## MISSION STATEMENT

At Springvale Park Special Developmental School we believe we have a responsibility to shape the fabric and identity of the school as a learning community which will maximise independence, individual potential and meet the needs of all learners.

# School Values

## Compassion

to recognize when others are sad and then take action to help.



## Integrity

the quality of being honest and having strong moral principles.



## Respect

regard for the feelings, wishes, or rights of others.



# Parent Catch up



9.30am—10.30am

2nd Wednesday

of each month

Starting 14th June 2023

Come along  
and join other parents  
for a coffee and chat



# Mother's Day Stall





# Mother's Day

# Breakfast



# professional development

share  
education  
engage

experience learn  
know corporate

create

continuing

responsibility  
two-directional

## Friday

## 9th June 2023



All staff will be participating in a Professional Learning Day

No school for students.



# King's Birthday

*Monday*

*12th June 2023*

# Public Holiday



**NO SCHOOL**



# HOLIDAYS



## Term 2 Holidays

### Commence

### 24<sup>th</sup> June 2023



### School Resumes

### 10<sup>th</sup> July 2023



## Variety Activate Inclusion Sports Day

### School Holiday Clinic

Monday 26 June 2023

We have an opportunity for your students to attend our free school holiday clinic!

**This is an inclusive event that offers children with disability the opportunity to participate in a range of sports and activities in a fun and welcoming environment.**

**Date:** Monday 26 June 2023

**Time:** 10am to 1pm (registration opens from 9:15am)

**Location:** Mullum Mullum Stadium

31 Springvale Road, Donvale 3111

**Cost:** FREE, open to children with disability

**Parking:** There are multiple options for car parking at the facility

This event is free to attend and open to all children aged 7-18 years with disability.

There will be a range of sports and activities available, including badminton, fishing, NRL, cricket, and netball.

Participants will receive coaching and guidance from experienced inclusive sports coaches.

If you have any questions about the event or would like more information, please contact Max Riley at Disability

Sports Australia directly via email [max@sports.org.au](mailto:max@sports.org.au)

or phone 0478 159 118

**We look forward to seeing the kids there!**



**St Mary's**  
Health Services

# WINTER SCHOOL HOLIDAY PROGRAM 2023



REGISTERED  
NDIS  
PROVIDER

Come join us for a fun and awesome program!

**33 HINKLER RD MORDIALLOC 3195**

**MON – FRI : 9AM – 4PM**

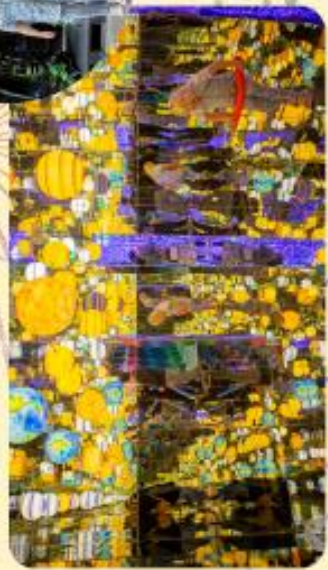
We are available from 8:30am for early drop offs (booking required in advance)



**St Mary's**  
Health Services

## MONDAY 26TH JUNE ACMI (THOR EXHIBIT)

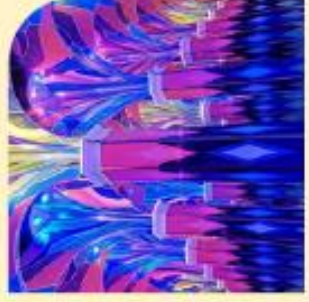
Super Hero fans of all ages can get up close and personal with suits, garments and instruments worn and wielded by Thor, Mighty Thor, Valkyrie, Gorr and Zeus - featured in the God of Thunder's latest cosmic journey of heroism and self-discovery



## TUESDAY 27TH JUNE MET ART WORLD

Met Art World is the largest collection of metal art, that offers a fully immersive family experience, where kids are allowed - and encouraged - to touch everything!

Then explore the fantasy starry sky exhibit where you will be immersed into another world of lights and shadows.





**St Mary's**  
Health Services



## **WEDNESDAY 28TH JUNE THE BIG GOOSE**

More than just an animal farm, The Big Goose combines old fashioned farm experiences with the fun of an adventure park. With a huge undercover playground for all ages, giant jumping pillow, pony rides and mini golf you will spend the whole day there.



## **THURSDAY 29TH JUNE GESAC SWIMMING**

Make a BIG splash at GESAC! The kids will be entertained for hours with their range of fun activities, including the Aquaplay playground, waterslides, and pools. There's something here for everyone!





**St Mary's**  
Health Services

## **FRIDY 30TH JUNE PUFFING BILLY**

Discover wonderful wildlife and spectacular landscapes made for adventure while sitting on the carriage sill of Puffing Billy's open-side carriages; a truly iconic experience that cannot be found anywhere else in the world.



## **MONDAY 3RD JULY SCIENCEWORKS**

Scienceworks is bursting with things to challenge curious minds of all ages. In just one visit, you can stroll among the gigantic machines that kept the city running, enjoy electrifying theatre in the Lightning Room and wander through immersive exhibitions



**St Mary's**  
Health Services



## TUESDAY 4TH JULY NATIONAL GALLERY OF VICTORIA

The NGV hosts one of the finest collections in the world, a wide range of exhibitions, programs and events; from contemporary art to major international historic exhibitions, fashion and design, architecture, sound and dance.



## WEDNESDAY 5TH JULY KEMIZO ENTERTAINMENT CENTRE

KEMIZO offers activities such as a play area, games arcade, Laser Tag Arena over 15 levels, full sized Roller Skating Rink, Sky Walk rope course and 5 rock climbing walls, suitable for all ages and ability levels.





**St Mary's**  
Health Services

## THURSDAY 6TH JULY BONEO DISCOVERY PARK

Boneo Discovery Park is 27 acres of wetlands and gardens showcasing amazing indigenous flora and fauna, including many specie of frogs, reptiles and water birds.

Also enjoy the mini golf, giant games garden and world class sand sculpting exhibition.



## FRIDAY 7TH JULY GONDOLA RIDE – ARTHURS SEAT

Soar the heights of the Mornington Peninsula with spectacular views on the Gondola at Arthurs seat. Enjoy the journey on the Gondola followed by a scenic walk & picnic lunch amongst the most stunning views of Port Phillip Bay.







**St Mary's**  
Health Services



REGISTERED  
NDIS  
PROVIDER

## DAILY COST

Activity	Complex 1:1	Standard 1:1	Standard 1:2
ACMI	\$648.10	\$604.67	\$365.14
Met Art World	\$649.85	\$606.42	\$366.89
The Big Goose	\$647.28	\$603.84	\$364.31
Gesac Swimming	\$646.95	\$603.52	\$363.99
Puffing Billy	\$648.60	\$605.17	\$365.64



**St Mary's**  
Health Services



REGISTERED  
NDIS  
PROVIDER

## DAILY COST

Activity	Complex 1:1	Standard 1:1	Standard 1:2
Scienceworks	\$648.00	\$604.57	\$365.04
National Gallery of Victoria	\$650.00	\$606.57	\$367.04
Kemizo Indoor Entertainment	\$648.21	\$604.78	\$365.25
Boneo Discovery Park	\$655.24	\$611.81	\$372.28
Gondola Ride	\$654.57	\$611.13	\$371.60



**St Mary's**  
Health Services

## **IMPORTANT INFORMATION**

**Duration:** Monday 26th June 2023 - Friday 7th July 2023

**Age requirements:** 7 - 22 years old

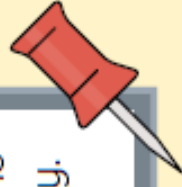
**Location:** 33 Hinkler Rd, Mordialloc 3195

**Hours:** 9am - 4pm

**Places available:** 20 - 25 children per day

**Ratio:** Complex Support 1 : 1, Standard Support 1 : 1, Standard Support 1 : 2

**What to bring:** Please ensure your child has a packed lunch and drink bottle. As well as a hat, sunscreen and a spare change of clothes. Please ensure appropriate footwear is worn. If you would like your child to purchase food on any day, please provide money.





**Excursions:** Children must arrive at the program at 9am to ensure we leave on time and everyone can fully enjoy the activities planned for the day. Participants must bring their own lunch, morning and afternoon tea and a drink bottle.

**Anaphylaxis Management:** Please note that if your child is anaphylactic, an Anaphylaxis Action Plan must be provided in advance. This is to ensure the safest possible environment for your child, and that relevant information is always readily available to staff. Your child cannot be granted admission to the program if you do not consent to this.

**Behavior Management:** St Mary's Health Services has the right to remove or refuse further participation of any child whose behavior is deemed to be inappropriate. Bullying, use of bad language, and harassment of other children or staff will not be tolerated under any circumstances. If you need to discuss this further, please speak with the Service Manager, Kim Le.





**St Mary's**  
Health Services

**If you or your child has a concern:** Please inform your child of their right to raise any concerns with St Mary's support staff. If your child raises a concern with you, please speak to the Program Coordinator on 9773 8234, or if the matter is of a serious nature, please speak to the Service Manager.

**Nut free policy:** Please be mindful that there may be children attending the program with allergies and/or anaphylaxis. Please do not pack any kind of nut products.

**Cancellation notice:** Activities are subject to changes or cancellations if we do not have enough expression of interest or weather permitted.

**Late cancellation:** If you cancel any booking with less than 2 working days notice, a total of 90% of the full amount will be charged.

**Registration or enquiry:** Please call our office on (03) 9773 8234 or email us at [helen@stmaryshealthservices.com.au](mailto:helen@stmaryshealthservices.com.au) or [rosa@stmaryshealthservices.com.au](mailto:rosa@stmaryshealthservices.com.au)



## FREE VIETNAMESE COMMUNITY WORKSHOP



Positive Partnerships joins Extended Families to hold this workshop where you will have the opportunity to listen, share and learn with other families from the Vietnamese community who support school-aged children on the autism spectrum.

At this workshop, you will learn about:

- Understanding autism and your child
- Strategies and tools to support learning

It is for parents, full-time carers and grandparents.

This workshop will be facilitated in Vietnamese and English with Vietnamese interpretation.

A free morning tea and lunch will be provided.

**Location:**

Noble Park Community Centre  
Ross Reserve, Memorial Dr  
Noble Park VIC 3174

**Date and Time:**

Wednesday 19th July 2023  
9:45 AM - 2:15 PM



**[To register, click here](#)**

For more information, contact:

Julia Klieber (To speak English)

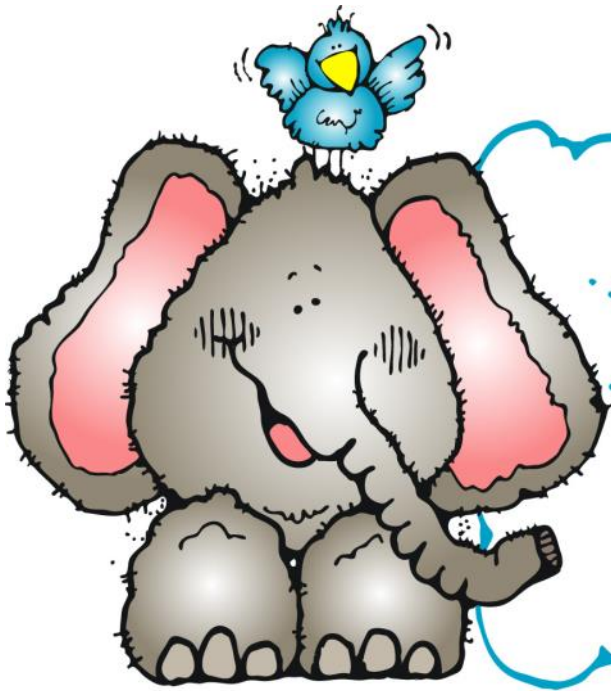
☎ 0481 955 551

✉ [Julia@extendedfamilies.org.au](mailto:Julia@extendedfamilies.org.au)

Mai Thanh Nguyen (To speak Vietnamese)

☎ 0449 562 979

✉ [mai-thanh.nguyen@extendedfamilies.org.au](mailto:mai-thanh.nguyen@extendedfamilies.org.au)



# Don't Forget!

It is important to keep your contact details up to date. Any changes to your contact details, or your emergency contacts, can be updated at the office or by sending a note



## School Term Dates 2023

Term 1: 27th January—6th April

Term 2: 24th April—23rd June

Term 3: 10th July—15th September

Term 4: 2nd October—20th December

**Please  
Keep Gate  
Closed**

*This is a  
Child Safe Area*



*For the safety of all our students, please  
close the front gate after yourself.*

*If you prefer, there is a pedestrian gate  
immediately in front of the  
School Office.*